

## GATEWAY ADMINISTRATION UTILITY (GAU)

The GAU is available for C200s with firmware versions **v1.67** and beyond.

### GAU ACCESS

#### 1. Establish a connection between the PC and the JBM Electronics Gateway.

##### METHOD 1: ETH0 Direct Connect (Straight Ethernet Port)

- Connect a crossover CAT-5 Ethernet cable between the local PC and the JBM unit's ETH0. **Verify that ETH0's link LED is lit.** (Straight cable for HUB/Switch)

##### METHOD 2: HUB/Switch Connection (Straight Ethernet Port)

- Connect a straight CAT-5 Ethernet cable between the HUB/Switch and JBM unit's ETH0. Connect another CAT-5 Ethernet cable between your local PC and the HUB/Switch. **Verify that ETH0's link LED is lit.**

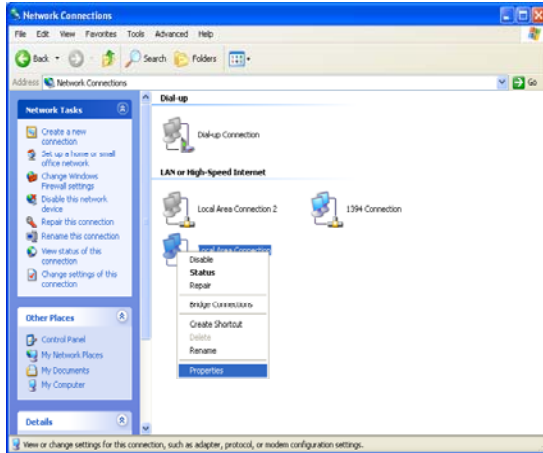
Port	Cable	Device
Straight (ETH0)	Straight	HUB or Switch
Straight (ETH0)	Crossed	PC



Note: This example shows cabling to a PC. Verify the link LED is lit. If the LED is not lit the cabling must be checked or Method 1 must be used.

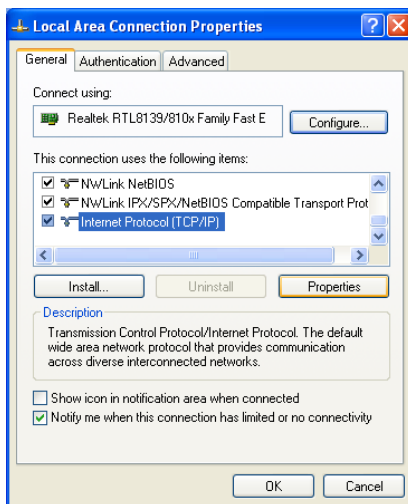
## 2. Setup the PC's IP.

Change the PC's IP Address by going to control panel and selecting network connections, the screen below will appear:

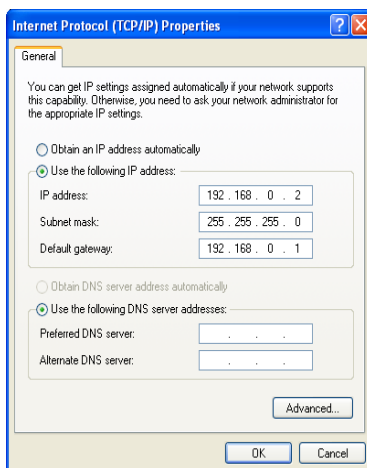


- Right Click **“Local Area Connection”** and select **“Properties”** (as shown to the left).

*NOTE: The screens and instructions displayed are based on W*

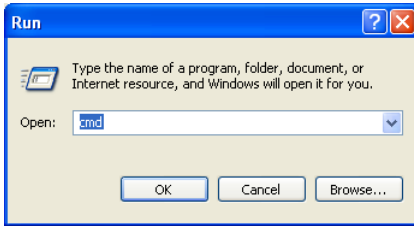


- Scroll down to the bottom of the following items and select **“Internet Protocol (TCP/IP)”** (as shown to the left).

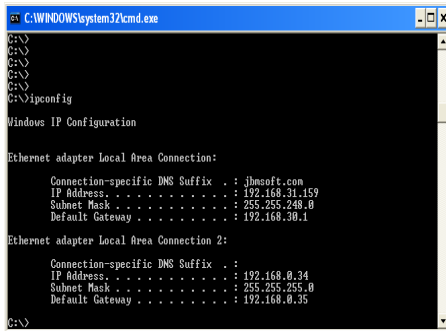


- Select **“Use the following IP address”** and fill in the blank fields with the information below:
  - IP address 192.168.0.2 (as shown to the left)
  - Subnet mask 255.255.255.0
  - Default gateway 192.168.0.1
  - Preferred DNS 192.168.0.1
  - Click **“OK”** for the next two screens.

- Verify that the IP change was accepted or acquired on the PC.



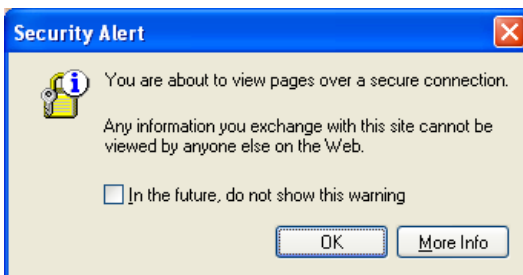
- On your desktop select “Start>Run”  
Type “cmd” Click “OK”



- Type “ipconfig” <Enter>  
- METHOD 1 should display an IP of 192.168.0.2

### 3. Login into the GAU.

- Open a web browser and enter the following in the address bar:  
*METHOD 1:* <https://192.168.0.1:10000/> or <https://192.168.0.1/>



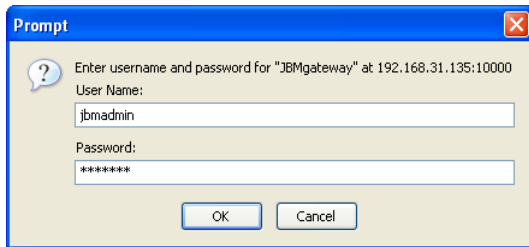
- You will receive an alert that you are about to view pages over a secure connection, *click “OK”*

*NOTE: The screens and instructions displayed are based on Microsoft Internet Explorer. Your system may be different. If you have any problems contact your system admin.*



- You will receive a certificate alert that information you send with this site cannot be viewed or changed by others.
- Ignore that it is not trusted, *click “Yes”*

- After you accept the certificate the login prompt will appear.



The image shows a Windows-style dialog box titled "Prompt" with a blue header bar and a close button (X) in the top right corner. The main area has a light beige background. At the top left, there is a question mark icon in a speech bubble. The text reads: "Enter username and password for 'JBMgateway' at 192.168.31.135:10000". Below this, there are two input fields. The first is labeled "User Name:" and contains the text "jbmadmin". The second is labeled "Password:" and contains seven asterisks "\*\*\*\*\*". At the bottom of the dialog, there are two buttons: "OK" and "Cancel".

### JBMgateway Login Instructions

- For User Name enter: **jbmadmin**
- For Password enter: **six digit serial number of unit**

(Use lowercase letters)