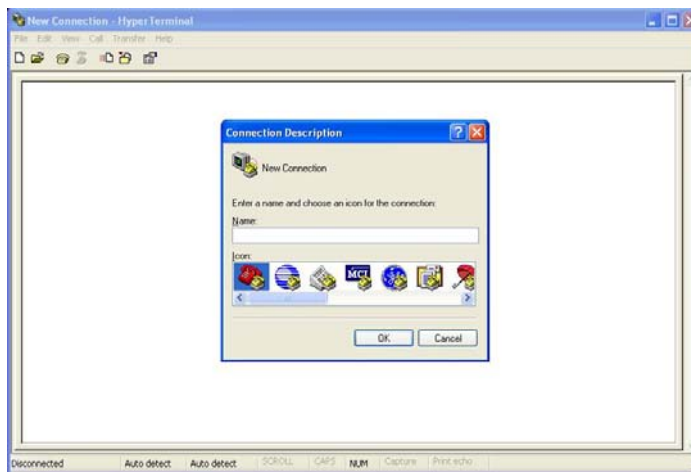


Establishing Console Access to the Gateway

Note: Before opening your terminal emulation program, please have the console cable plugged into the 9-pin port on the **back** of the unit and to an available COM port on your PC. Also make sure unit is plugged in and receiving power.

1. From the Windows Desktop click **Start > Run** and type “**hypertrm.exe**”. This will start the Hyper Terminal application.



2. Enter a name for the connection. Any alphanumeric combination is acceptable. Select an icon to represent the connection. *Click **OK***.

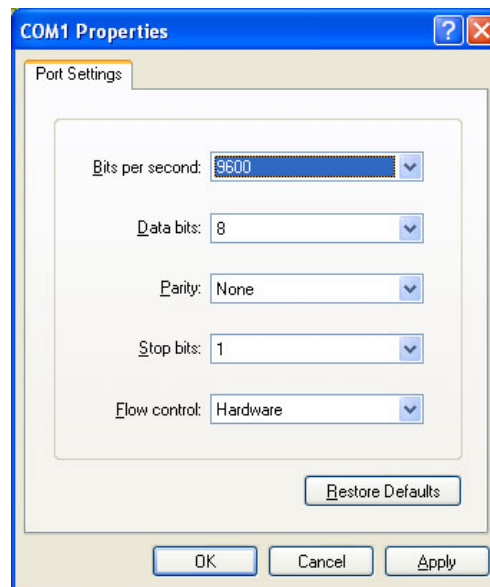


3. Once you clicked OK, it will open a window called “Connect To”. Click the setting called “**Connect Using**” and select **COM1**. *Click **OK***



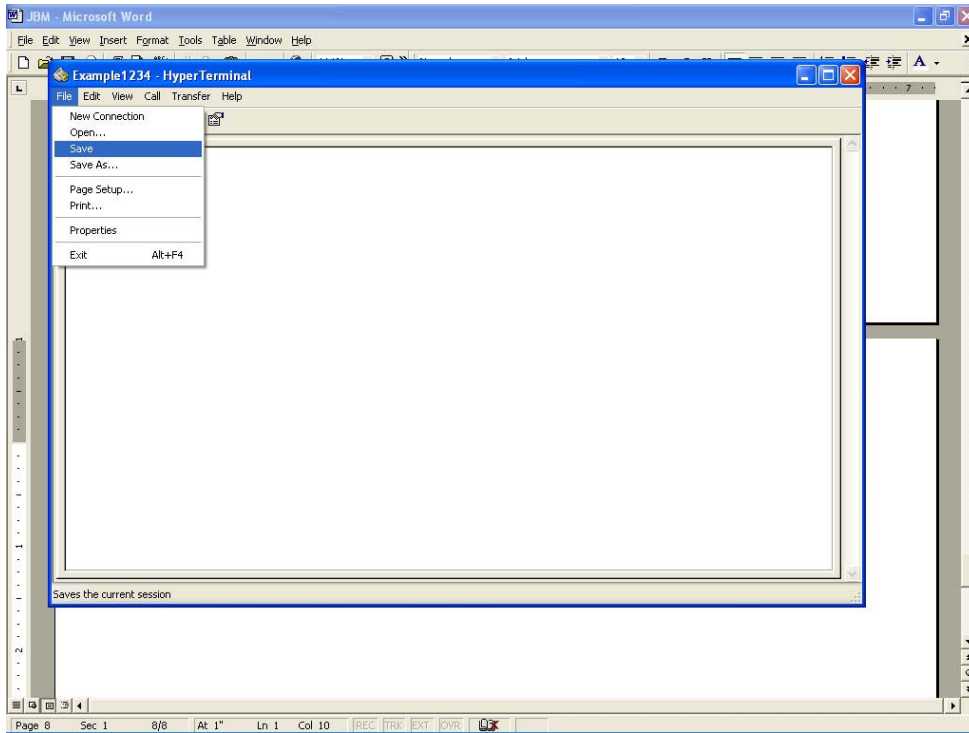
4. Use the following parameters to configure the port settings. *Click **OK***

- Bits per second: 9600
- Data bits: 8
- Parity: None
- Stop bits: 1
- Flow Control: Hardware



Note: Use these settings in all Terminal Emulator programs.

5. Click on **File > Save**. This will store the connection settings under the name and icon previously selected in (Step 2).



6. Press **Enter** and the Hyper Terminal session will connect to the Gateway (using the parameters previously saved), and a connection window will appear with the JBM Gateway Login Screen.

